

LIVE BEYOND BOUNDARIES IN PARADISE



INTERCONTINENTAL®
PHUKET RESORT
THE RESIDENCES





The Residences at InterContinental Phuket Resort
is not a retreat from life, but a place where life thrives.

It's your chance to **LIVE BEYOND BOUNDARIES IN PARADISE**
where every day is a perfect balance of tranquil seclusion,
authenticity, and dynamic experiences.

Developed by





BRAND OVERVIEW

THE WORLD'S FIRST INTERNATIONAL LUXURY HOTEL BRAND

Founded in 1946 by international travel pioneer Juan Trippe, InterContinental Hotels emerged during a time when air travel dramatically shortened global journeys. Inspired by the success of the Pan American Clipper “flying boat,” which revolutionized elegant, efficient travel, Trippe responded to the post–World War II boom in trade and tourism promoted by President Roosevelt. Seeing a lack of luxury accommodation for the new wave of travelers, he envisioned hotels that combined modern comfort with authentic local culture — and thus InterContinental Hotels was born.



Juan Trippe Founder of Pan American Airways and InterContinental Hotels

OUR HISTORY

- 1949 ○ The first InterContinental Hotel opens in Belém, Brazil.
- 1961 ○ The Phoenicia in Beirut, Lebanon opens, as does the first InterContinental in Australia, the Southern Cross in Melbourne.
- 1965 ○ The Siam InterContinental Bangkok opens and becomes a city landmark.
- 1970 ○ InterContinental opens across the Middle East with Forbes Magazine describing the property in Riyadh as “the most difficult hotel to get a room.”
- 1980s ○ 70 properties open across the globe including the Willard in Washington DC, now trading under the InterContinental flag.
- 1994 ○ The Presidente Group signs a joint venture to bring six hotels and resorts under the InterContinental flag.
- 2008 ○ InterContinental Beichen and InterContinental Qingdao open as the first properties in China.
- 2015 ○ The InterContinental Danang Sun Peninsula, Vietnam is awarded the World’s Leading Luxury Resort.
- 2021 ○ InterContinental celebrates its 75th Anniversary as the first leading international hotel brand.



WHERE GREAT THINGS HAPPEN

From iconic meetings to historic moments, our hotels have been the backdrop to some of society's most cherished moments. It is the hotel that creates the fondest memories from ex pats living overseas to locals creating their unique celebrations.

“Meet me at the InterContinental” became a common phrase to travellers in exotic destinations, as ballrooms, lobby lounges and pool decks became the place for guests to gather and celebrate momentous occasions.



IHG LUXURY BRANDS

Side-by-Side Descriptions

LIFESTYLE LUXURY

DISTINCT LUXURY



*Narrative-led collection
Inspired by the location*

*Design-led hotels
Individual identities*

*Cultivated elegance
Timelessly modern*

*Wellness-based authenticity
Naturally contemporary*

*Discreet maximalism
Personalized+emotional*

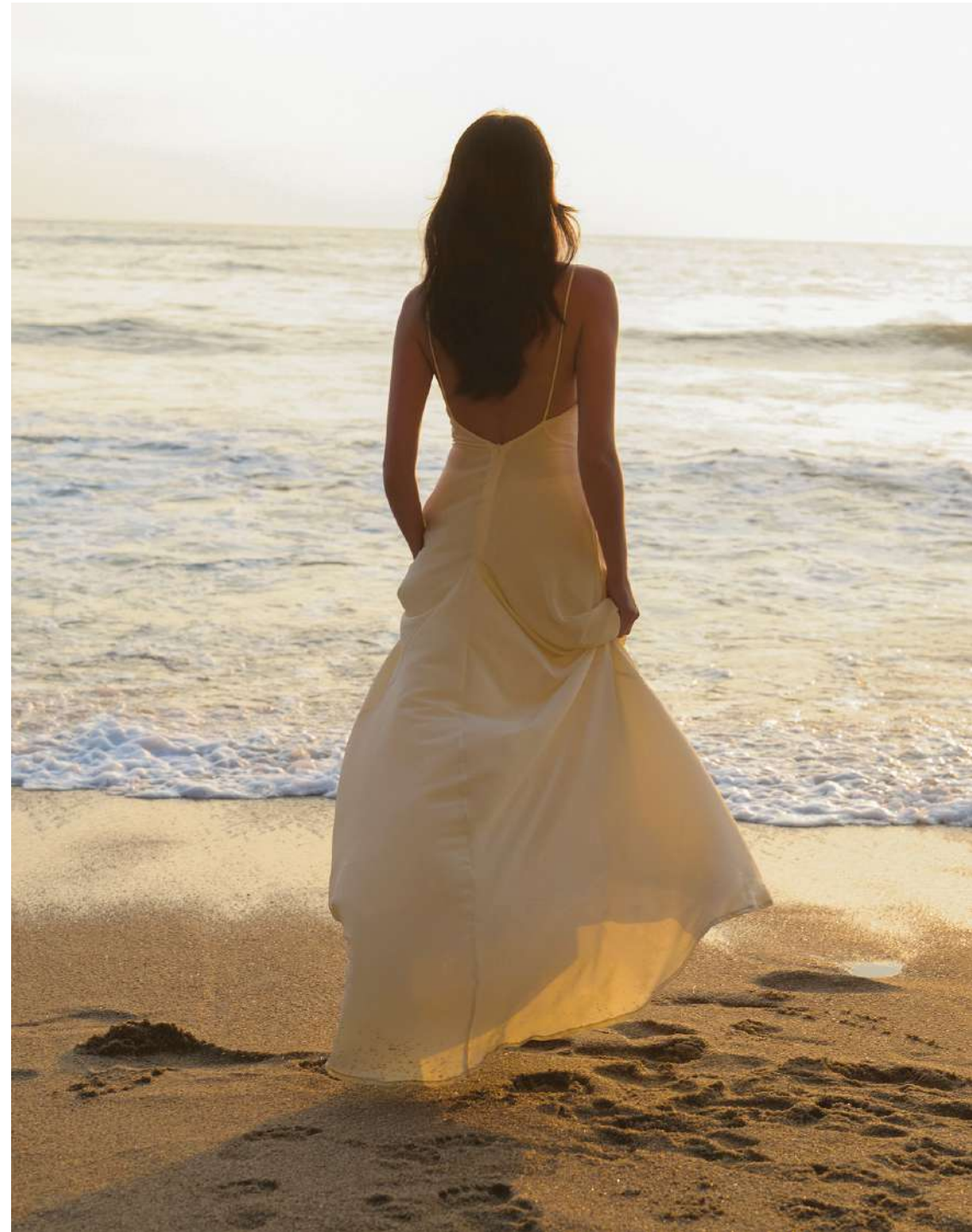
A JOURNEY OF MOMENTS,
A DESTINATION OF DREAMS

Follow the curve of Phuket's golden west coast
and you'll find a sanctuary where the sea whispers to the shore
—*The Residences at InterContinental Phuket Resort*.
Cradled by the emerald hills of Kamala and kissed by
the Andaman's turquoise waters, this is where journeys end
and dreams begin. Let this map be your compass to a world
of cultural elegance, serene beauty, and timeless luxury.

KAMALA BEACH PHUKET'S HIDDEN GEM

Kamala is truly Phuket's hidden gem — a destination that combines natural beauty, cultural richness, and an unrivalled sense of serenity. Unlike the busier stretches of the island, Kamala embodies quiet luxury: a pristine beachfront community where privacy, exclusivity, and connection flourish in balance.

Framed by luxury resorts, fine dining, and iconic venues like Café Del Mar, and anchored by the prestigious Millionaire's Mile, Kamala has become Phuket's most distinguished residential enclave. With world-class wellness and medical facilities on the horizon, it promises not only tranquility and accessibility, but also a lifestyle elevated beyond the ordinary.



KAMALA BEACH PHUKET'S HIDDEN GEM

MILLIONAIRE'S MILE



Named for its luxurious hillside residences overlooking the breathtaking Andaman Sea, Millionaire's Mile is a retreat for families and travelers—where serene beauty meets vibrant leisure, enhanced by luxury beach clubs.

A HARMONY OF TRADITION AND NATURE



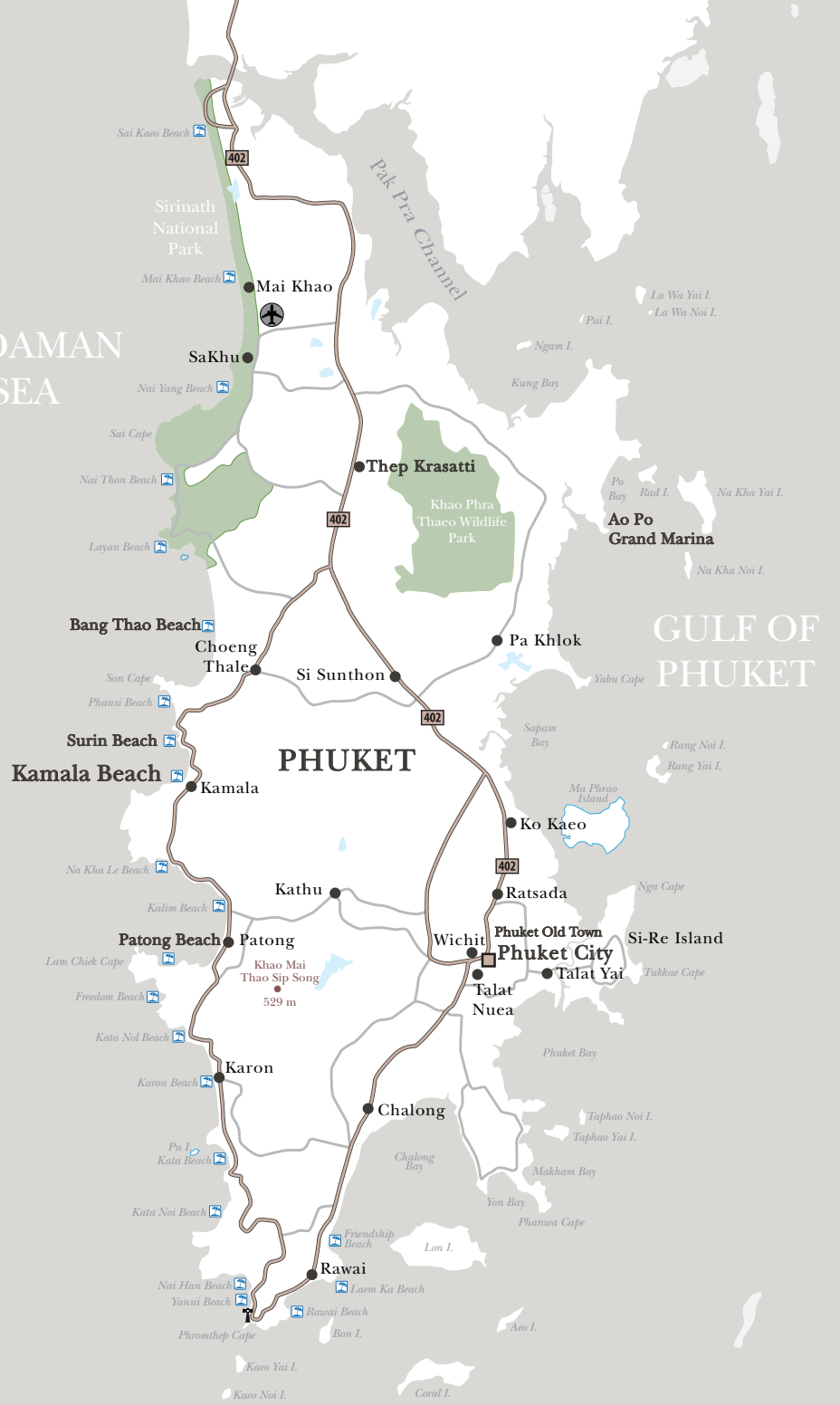
Kamala Beach is a community that preserves its traditional culture and way of life. Many locals engage in small-scale fishing, reflecting their deep bond with the sea and natural resources.

PEACEFUL RETREAT



Kamala Beach is perfect for relaxation and experiencing authentic local life. Its charm lies in the balance of cultural heritage and coastal serenity, while offering easy access to Phuket's vibrant lifestyle.

ANDAMAN
SEA



CENTRALLY LOCATED, PERFECTLY CONNECTED

Surin Beach

5 minutes: Elegant beach clubs and fine dining.

Bang Tao Beach

10 minutes: Laguna Phuket, Boat Avenue lifestyle hub, golf courses.

Patong Beach

15 minutes: The island's entertainment and nightlife capital, close yet comfortably removed.

Phuket Old Town

25–30 minutes: A cultural and culinary hub of Sino-European heritage, art, and Michelin dining.

Ao Po Grand Marina

45 minutes : Embark on a marine adventure to the pristine beauty of the Andaman Sea.



KAMALA BEACH – QUIET LUXURY ON THE ANDAMAN

Nestled along one of Phuket's most pristine stretches of sand, Kamala is a destination that blends natural beauty, cultural richness, and a rare sense of serenity. Unlike the busier corners of the island, Kamala represents quiet luxury: privacy, exclusivity, and community in perfect harmony.



DISTANCE FROM THE PROJECT

ONE MONTAZURE
150m (2 minute walk*)

KAMALA BEACH
360m (5 minute walk*)

SURIN BEACH
2.8km (5 minute drive*)

BANGTAO BEACH
4.7km (10 minute drive*)

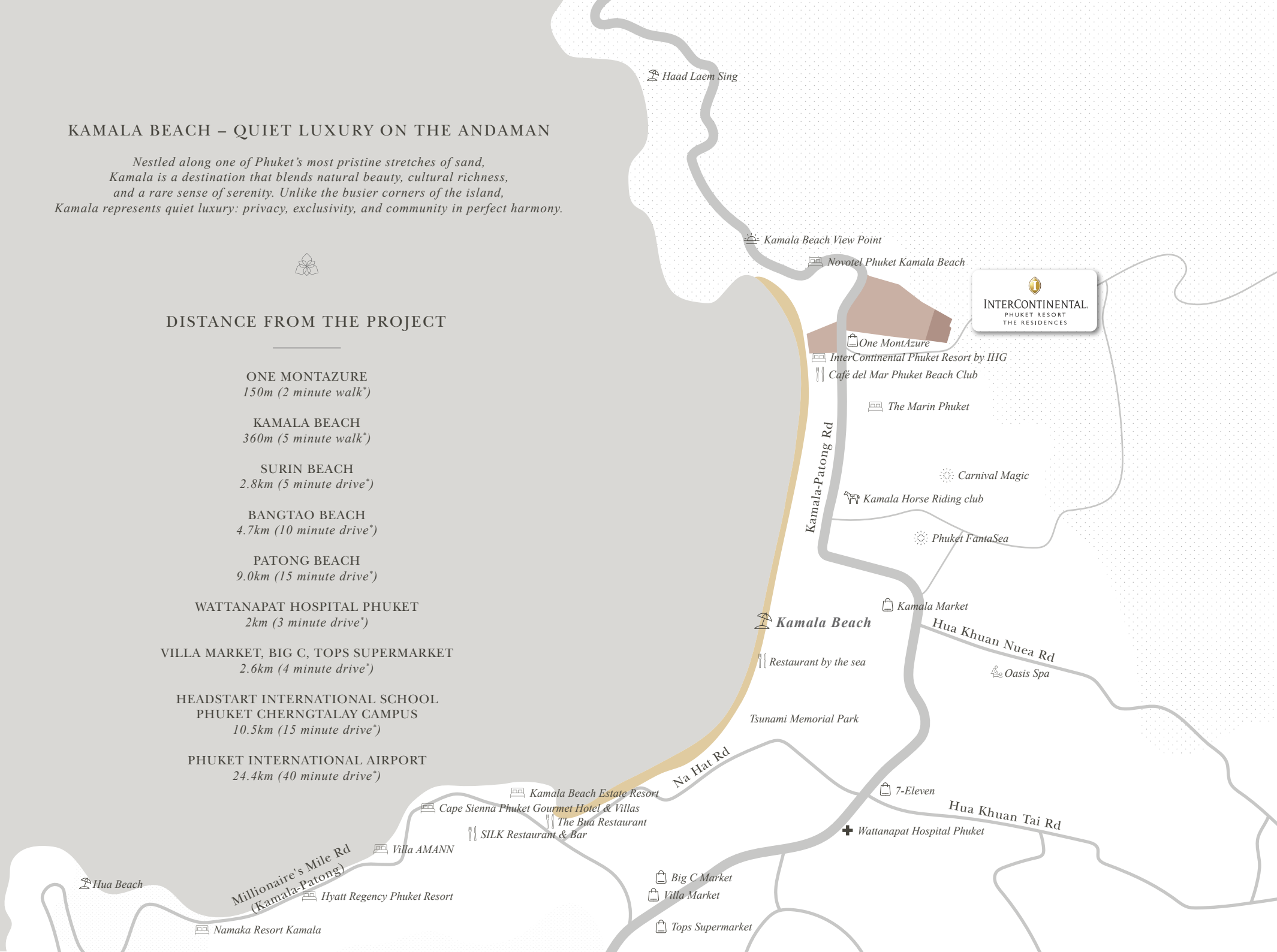
PATONG BEACH
9.0km (15 minute drive*)

WATTANAPAT HOSPITAL PHUKET
2km (3 minute drive*)

VILLA MARKET, BIG C, TOPS SUPERMARKET
2.6km (4 minute drive*)

HEADSTART INTERNATIONAL SCHOOL
PHUKET CHERNGTALAY CAMPUS
10.5km (15 minute drive*)

PHUKET INTERNATIONAL AIRPORT
24.4km (40 minute drive*)





Modern contemporary design



PROJECT INFORMATION

Project:	The Residences at InterContinental Phuket Resort		
Location:	Kamala Subdistrict, Kathu District, Phuket		
Land area:	3-1-40 rai		
Project type:	Two 7-storey condominium buildings and one 3-storey facilities building		
Total of units:	111 Units		
Unit type:	1 Bedroom	59 - 67	Sq.m.
	1 Bedroom Corner	58 - 76	Sq.m.
	2 Bedroom	100 - 134	Sq.m.
	2 Bedroom Corner	100 - 117	Sq.m.
	2 Bedroom Plus	117 - 134	Sq.m.
	2 Bedroom with Private Pool	169 - 188	Sq.m.
	3 Bedroom	203 - 214	Sq.m.
	4 Bedroom Junior Penthouse	201	Sq.m.
	5 Bedroom Penthouse	425	Sq.m.
Wellness & Lifestyle Facilities:	25-meter hydrotherapy lap pool with adjoining shallow pool for families. Sala Pavilion for private dining, intimate celebrations, and curated gatherings. Rooftop yoga and meditation pavilion with sweeping mountain and ocean views. State-of-the-art fitness studio featuring Technogym equipment and Grohe's AquaSymphony shower experience. Paradise Garden Court, a lush landscaped sanctuary for leisure and reflection. Library & Game Room, designed for relaxation, connection, and entertainment.		
Common fee :	120 Baht/Sq.m.		
Sinking Fund :	800 Baht/Sq.m.		

REFINED LIVING AWAITS

World-Class Branded Residences

Experience the prestige of InterContinental living, where global standards meet local elegance.

Direct Hotel & Beach Access

Enjoy seamless access to exclusive hotel amenities and direct pathways to pristine Kamala Beach. Nestled on the serene shores of Kamala, your home offers a peaceful sanctuary amidst natural beauty.

Distinctive, Signature Design

Each residence is thoughtfully crafted, blending contemporary sophistication with authentic artistry.

Low-Density, Ultimate Privacy

Limited residences, indulge in an intimate environment designed for ultimate privacy and comfort.

Health & Well-Being Oriented Design

Focused on well-being with facilities designed for relaxation and promoting a healthy lifestyle.

Exclusive Owner Privileges

Owners enjoy special discounts and benefits at partner hotels, adding an extra layer of appeal.

Sustainability Leadership

Projects are designed with sustainability in mind, promoting energy-efficient living.

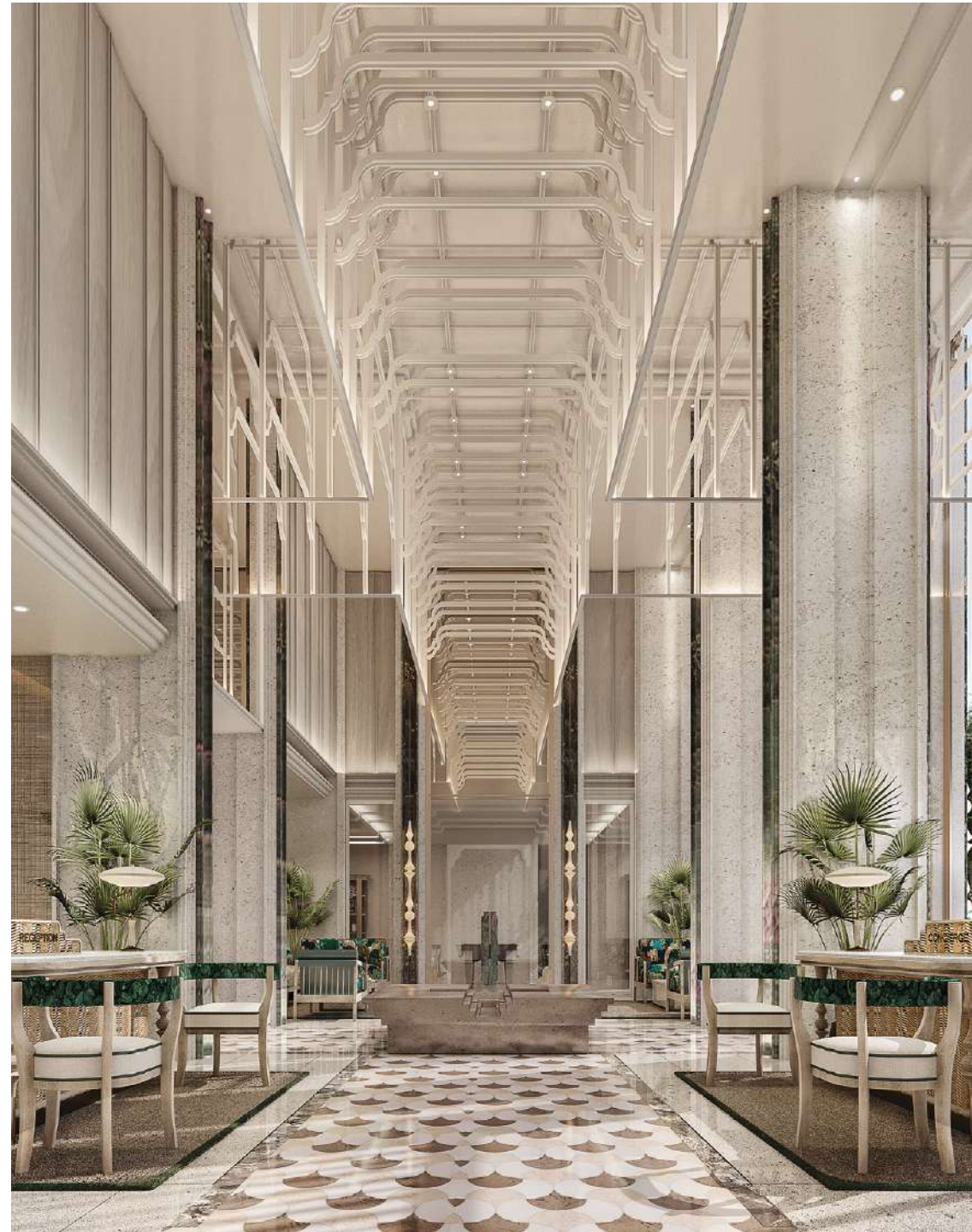




WHERE HERITAGE MEETS BESPOKE LUXURY

Rooted in the timeless allure of Phuket's cultural heritage and nestled near the tranquil shores of the luxury Kamala beach, our residences offer more than a home.

With world-class services and amenities tailored to your every need at your doorstep, each moment is an opportunity for well-living the way you want to, while still being authentically connected to your surroundings.







DISTINGUISHED LIVING, EXCLUSIVELY YOURS

This is more than a residence. It is a sanctuary where culture, wellness,
and world-class hospitality converge. A rare opportunity to own Phuket's
only luxury branded residences by one of the world's top hotel operators —
InterContinental Hotels & Resorts.

PROUD REAL ESTATE PLC.

A leading property developer in Thailand and a listed company on the Stock Exchange of Thailand (SET), we are dedicated to crafting residential projects inspired by the concept of "ALL IS WELL."

A well-lived life is a fulfilled life. A truly fulfilling life stems from balance. Perfect balance is the essence of long-lasting happiness. At Proud Real Estate, we hold "Sustainable Happiness" as our highest value. Every aspect of our residential development projects location, design, functionality, service, and innovation—harmonises flawlessly to enhance every life.

THE DEVELOPMENT TEAM

ARCHITECTURAL DESIGNER

HABITA ARCHITECTS

Habita Company Limited is an architectural and planning firm with an experienced staff of design professionals, founded in 1980, providing services to clients throughout Thailand and in neighboring countries.

www.habitaarchitects.com

LANDSCAPE DESIGNER



A landscape architecture and design studio. PLA began as a boutique landscape design practice in 1997 and has since evolved into an association of creative and talented individuals, comprising landscape architects, designers, horticulturalists, and artists.

www.plandscape.com

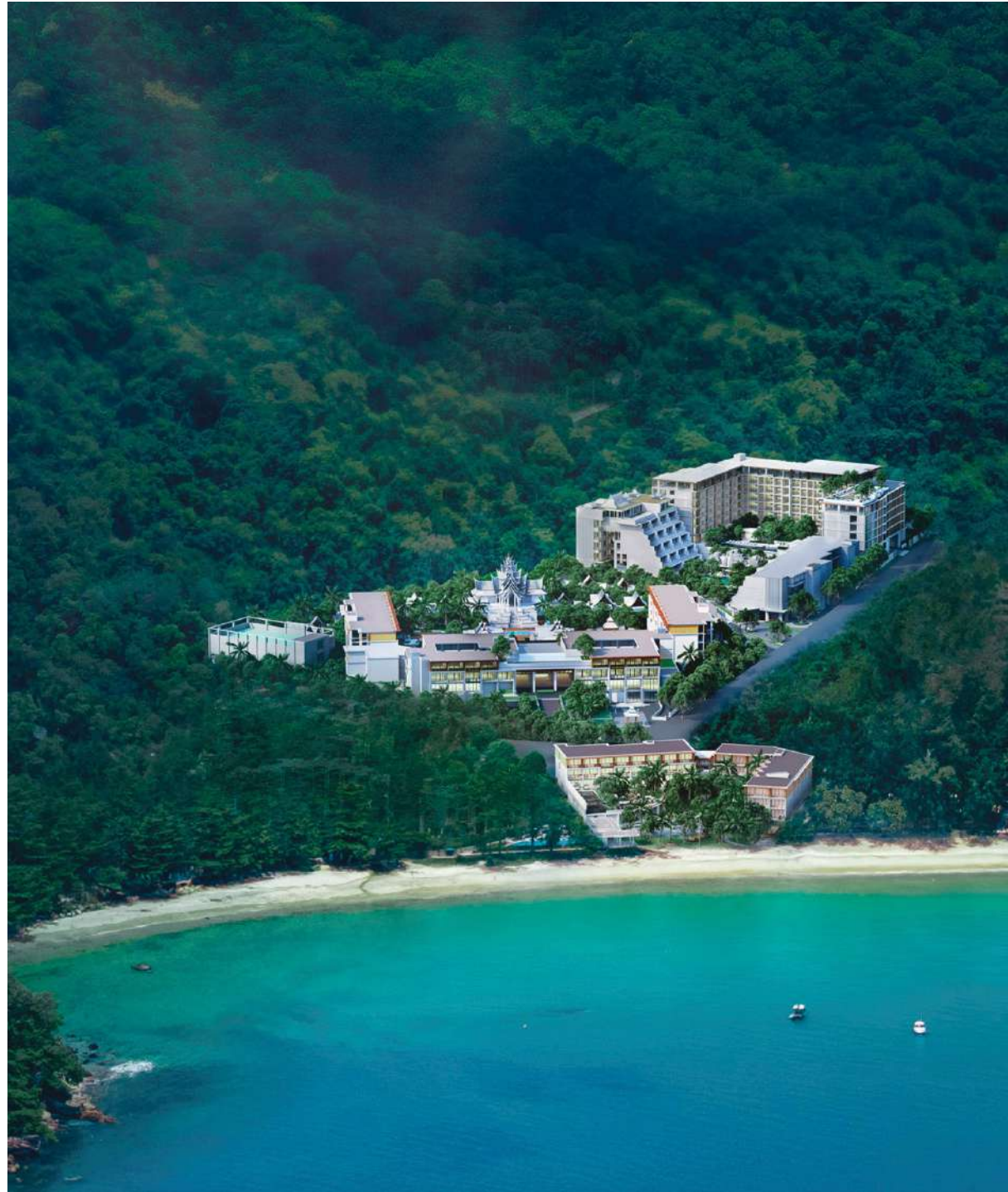
INTERIOR DESIGNER



PIA Interior is Thailand's leading interior design firm, with over 30 years of creativity, diverse experience in the design and execution of private residences, hotels and resorts, corporate offices, retail spaces, and public buildings.

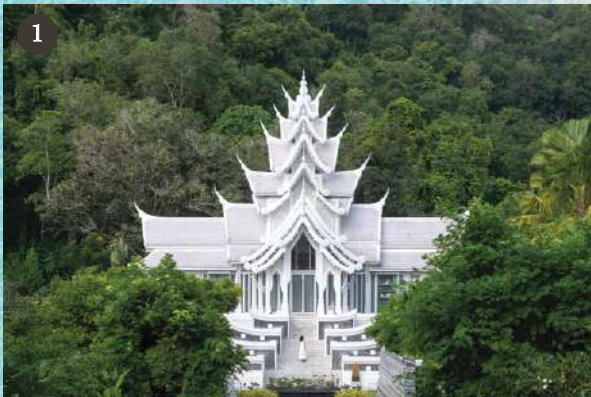
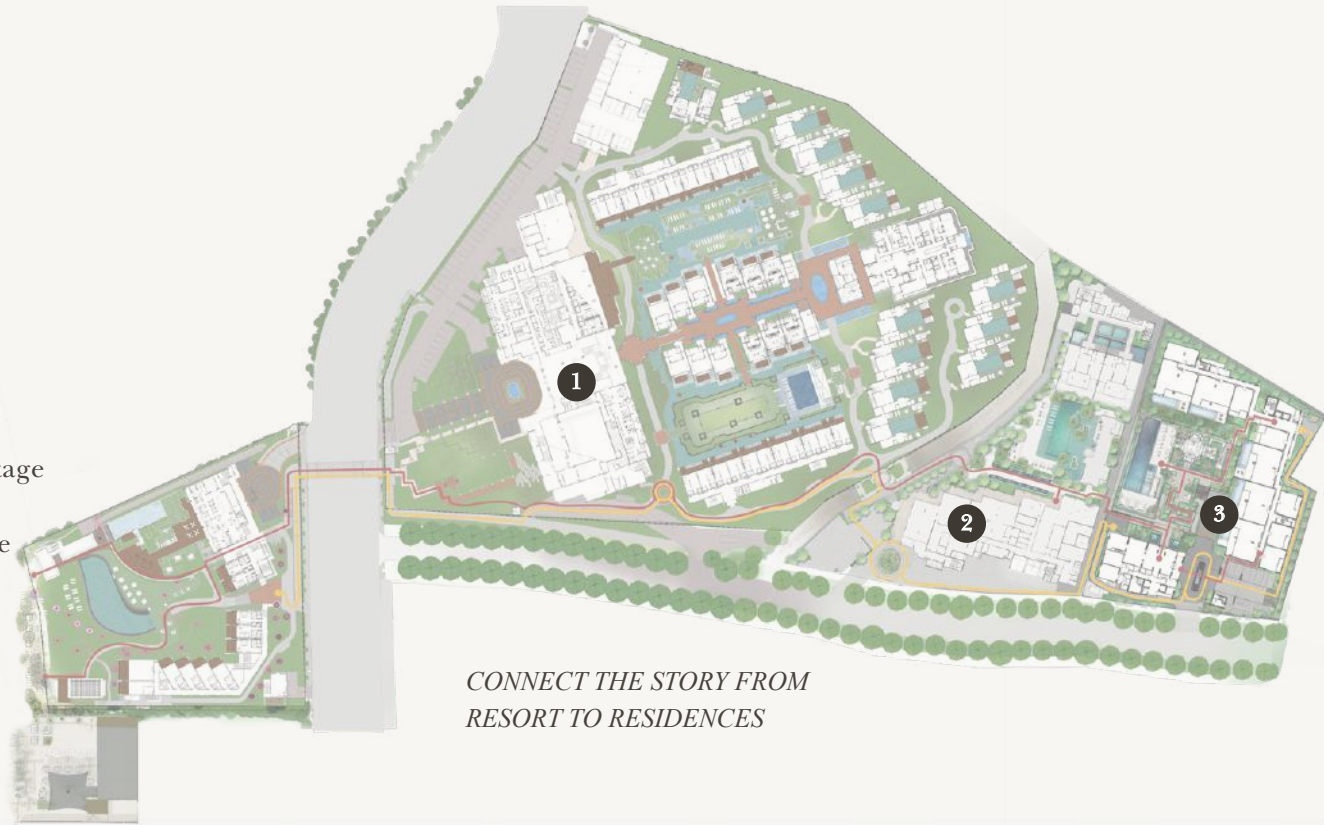
www.piainterior.com

Choose *The Residences at InterContinental Phuket Resort* and discover life in balance, where every moment is an opportunity to live fully, authentically, and effortlessly beyond boundaries.



TRILOGY - INSPIRED CULTURAL ELEGANCE

Rooted in the Traibhumikatha trilogy, the residences extend the story of InterContinental Phuket Resort Far East Paradise (Thai-inspired Paradise) Blending the timeless charm of Phuket's Peranakan heritage with elevated design, it creates a sanctuary of culture, wellness, and world-class hospitality-where life at the edge of heaven becomes everyday living.



HEAVEN

The hotel as the Heart of Heaven, where the story begins



GARDEN OF HEAVEN

The Emerald Pool and gardens as the Garden of Heaven

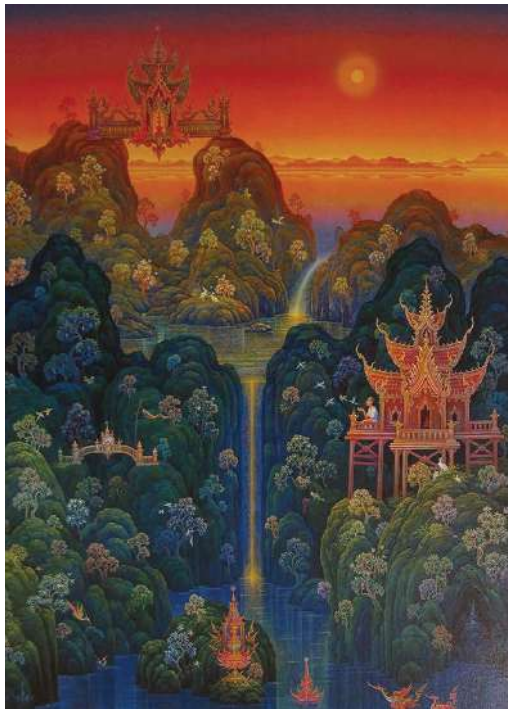


FAR EAST PARADISE

The residences as the Edge of Heaven, where everyday life is elevated beyond the ordinary

ARCHITECTURE – A MODERN REIMAGINING OF HERITAGE

The residences reinterpret Phuket's Sino-European and Peranakan heritage in a contemporary way, with distinctive step-cornered forms that echo the rhythm of the island's cultural past while embracing modern elegance.



Artistic painting by Chalermchai Kositpipatis regarded as a national artist in Visual Arts (Painting) -Inspiration from 'Tribhumikatha'

Sino-European and Peranakan culture is vividly displayed through their exquisite attire, ornate jewelry, and beautifully decorated homes

LANDSCAPE – AT THE EDGE OF THE HIMMAPAN FOREST

The gardens are envisioned as the boundary of the mythical Himmapan Forest, where sacred plants of the three worlds (Pañcaputtha) coexist in harmony with local flora. This creates a landscape that is both lush and symbolic — a natural sanctuary that reflects the cosmology of heaven and earth.



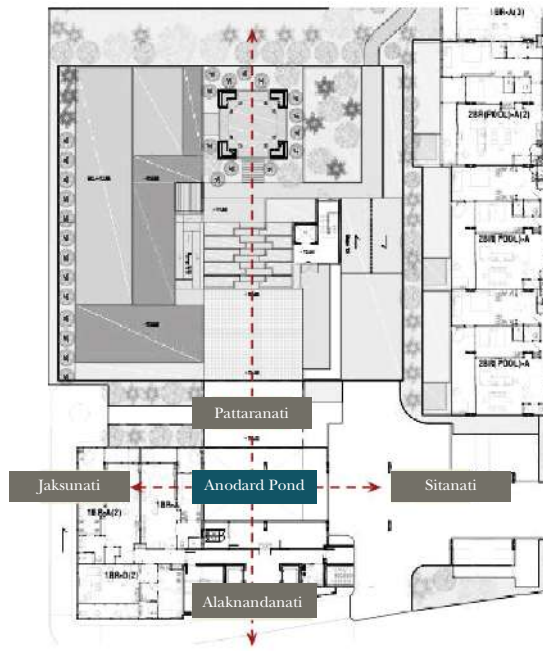
The mural paintings at Wat Suthat Thepphavararam vividly portray imaginative depictions of the mythical Himmapan forest.



Plant Design Concept

INTERIORS – WHERE THE RIVERS OF HEAVEN CONVERGE

"A celebration of contemporary elegance, harmoniously blending the mythical Himmaman forest with the rich cultural heritage of Phuket—where Peranakan artistry meets Sino-European sophistication. The design further embraces authentic Thai color tones, artfully inspired by traditional Thai paintings, creating an enchanting atmosphere that reflects timeless charm with a modern sensibility."



The cartographic artistry of ancient maps and Anodard Pond found in the Traiphum Illustration Manuscripts of the Ayutthaya and Thonburi periods

Design inspiration from Himmamanmap and thai tone at the lobby

THE SECRET GARDEN OF HIMMAPAN

A story focusing on the lush, mystical abundance of Himmapan's enchanted flora, unseen by human eyes. Imagine enormous glowing flowers that illuminate the night, vines that move and wrap around ancient trees as if alive, with crystal-clear streams flowing into hidden waterfalls and tranquil ponds blooming with water lilies. This concept merges the richness of nature with surreal imagination, showcasing the enigmatic beauty and mysterious allure of an inaccessible land. A Himmapan forest design in Toile pattern style, divided into sections, each featuring a sacred mythical creature and an atmosphere that reflects its unique characters.

The 4 Guardians of the Himmapan Forest

- 🌀 *Kraison Siha (Lion)*
“The Majestic Lion of Might”
Roaming the golden grasslands of Himmapan, this regal lion stands as guardian of the forest's sacred gates—a symbol of strength, wisdom, and royal authority.

- 🌀 *Durong Paksin (Winged Steed)*
“The Winged Steed of the South”
With wings of silver mist, this celestial horse soars above Himmapan's treetops. It carries winds of change and the spirit of freedom through enchanted skies.

- 🌀 *Nok Karawik (Melodic Bird)*
“The Enchanting Karawik Bird”
Perched on jeweled branches, the Karawik sings melodies that awaken blossoms and calm beasts. It is the voice of serenity in the heart of the forest.

- 🌀 *Matcha Whan (Leviathan of the Deep)*
“The Leviathan of the Sacred Waters”
Hidden in the still lakes of Himmapan, this great fish-whale stirs the waters with ancient grace. A keeper of secrets, it guards the balance of the forest's lifeblood.



CONCEPTUAL DESIGN : INTERIOR

VENTILATOR PATTERN



PERANAKAN ARCH



COLONATE / RHYTHM



STEPPED CORNER



VENTILATOR PATTERN



Designing the façade openings along the residential corridor and the sliding windows inside the units to maximize natural light and ventilation for residents.

PERANAKAN ARCH



Incorporating the influence of Peranakan-style arched doorways into the interior design, blending it into both the residential units and the project's common areas.

COLONATE / RHYTHM



Extending the Peranakan arch concept into the interior design by, for example, repeating ceiling structures in the library and game room to create a distinctive character and add dimension to the space, while maintaining an oriental aesthetic.

STEPPED CORNER



Adopting the Thai architectural feature of "corner recession" for the building façade. This involves shaping columns, bases, platforms, or building tops with softened corners to reduce harshness, enhance safety by eliminating sharp edges, and create beauty through light and shadow. This Thai identity is blended with contemporary design and expressed through the concept "Oriental on Paradise."

WORLD-CLASS HOSPITALITY,
EXQUISITELY CURATED

*Ownership brings not just a residence, but a life defined
by world-class hospitality. Every detail is exquisitely curated
by the team of InterContinental Phuket Resort — from
Michelin-recognized dining and yacht journeys across the Andaman,
to in-residence wellness and personal training.*

HOTEL-MANAGE
SERVICES



Housekeeping, laundry, in-room dining, 24-hour security, landscaped gardens, and dedicated concierge

EXCLUSIVE FACILITIES
ACCESS



Direct access to the resort's beachfront, beach pool, sun loungers, and seaside amenities — offering all the privileges of a beachfront property.

AWARD-WINNING
HOSPITALITY



Two Michelin Keys, Michelin-mentioned restaurants, an award-winning spa, tennis courts, and comprehensive wellness offerings.

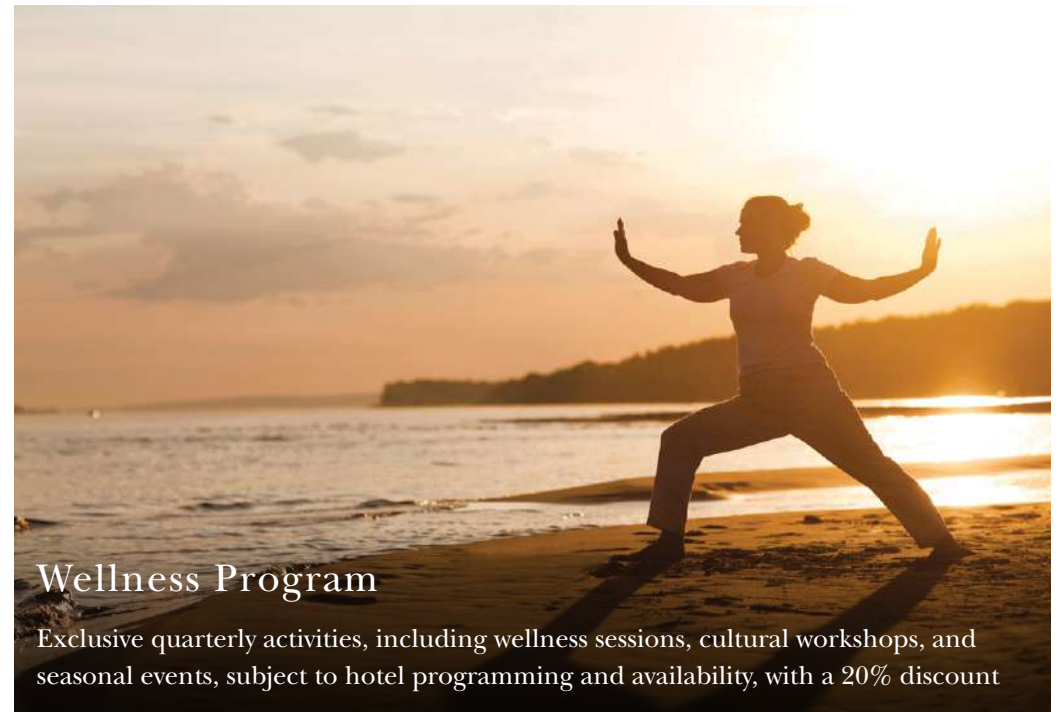
ASSURED QUALITY



The only residences integrated with a fully operational InterContinental resort, ensuring consistent service excellence, backed by Proud Real Estate's proven expertise in luxury living.

HOTEL FACILITIES

Indulge in an elevated lifestyle where every need is anticipated. From a *personal butler* and gourmet *in-room dining* to thoughtful *kid-friendly* services, your comfort is paramount. Rejuvenate at our *world-class health and spa*, knowing *24/7 safety and maintenance* ensure uninterrupted serenity. This is living where luxury, well-being, and peace of mind converge.



Wellness Program

Exclusive quarterly activities, including wellness sessions, cultural workshops, and seasonal events, subject to hotel programming and availability, with a 20% discount



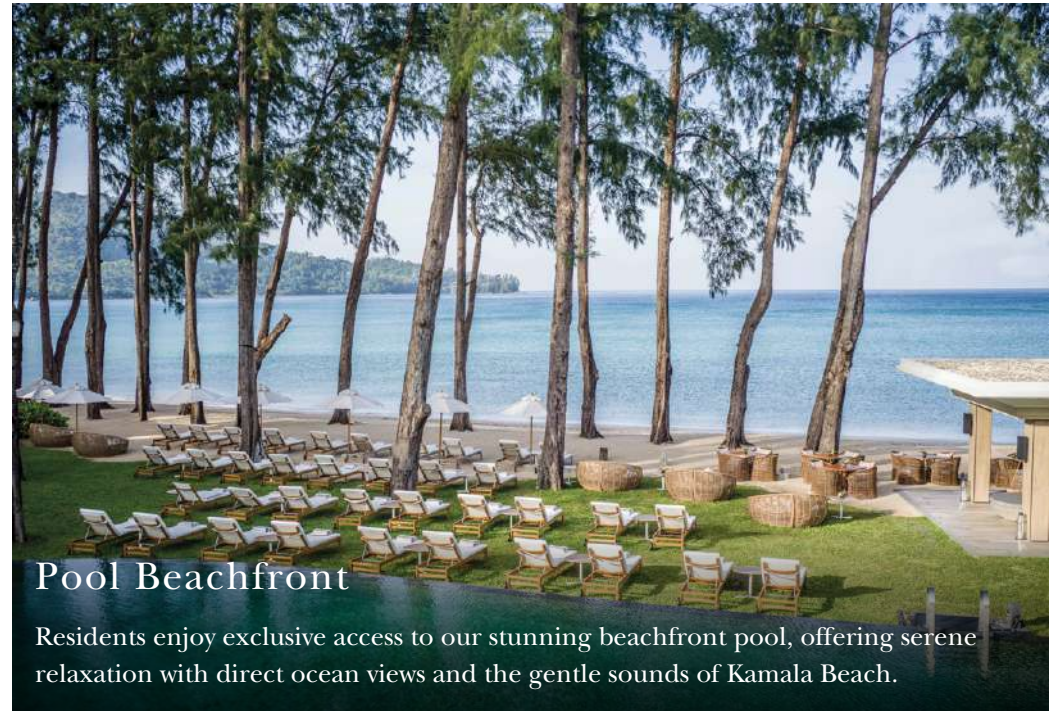
Kid's Club

20% discount on Planet Trekkers (Kid's Club) for all children's activities



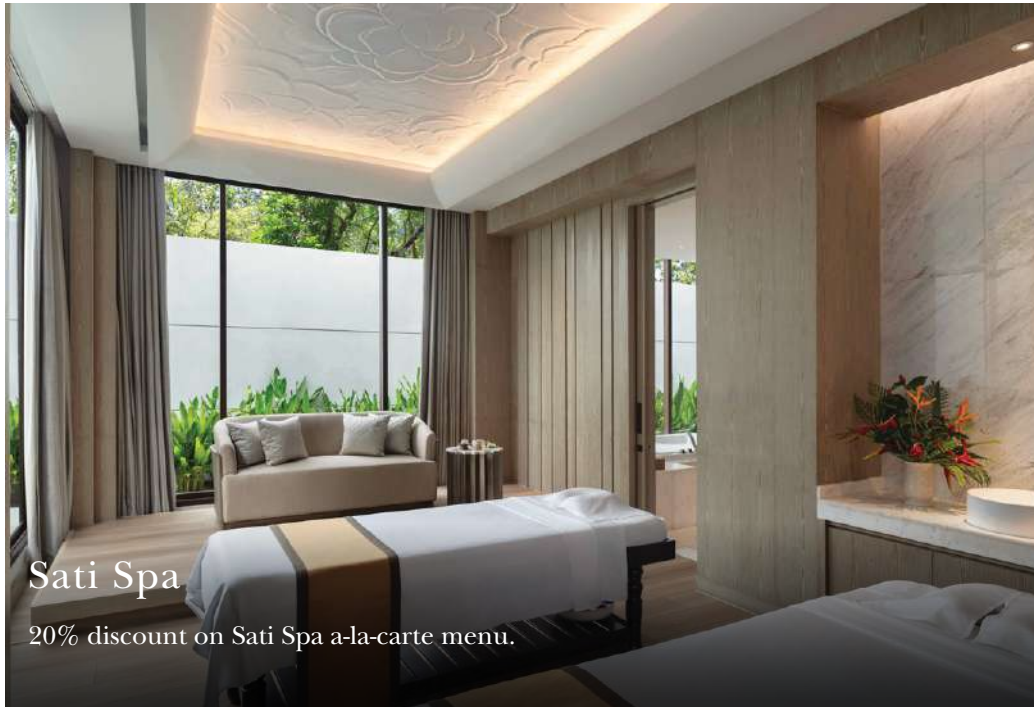
Hom Restaurant

Elevate your dining moments with exquisite Michelin-recognized creations in a truly fine dining experience.



Pool Beachfront

Residents enjoy exclusive access to our stunning beachfront pool, offering serene relaxation with direct ocean views and the gentle sounds of Kamala Beach.



Sati Spa

20% discount on Sati Spa a-la-carte menu.



Tennis Court

Enjoy three complimentary tennis court sessions per year (one hour per session) and receive a 20% discount on any additional bookings.

RESTAURANTS

Beach side

JARAS



Opening Time

12.00 - 22.00 hrs.

9-Course Dinner 18.00 - 22.00 hrs.

(1 Day advance reservation required)

Cuisine Type

*Habitat-conscious, Ecologically pure,
Southern Thai*

PINE BEACH BAR



Opening Time

08.00 - 24.00 hrs.

Food menu 12.00 - 22.00 hrs.

Sunday Brunch Every Sunday,

12.00 - 15.00 hrs.

Cuisine Type

Premium international and cocktails

333 AT THE BEACH



Opening Time

10.00 - 22.00 hrs.

Food menu 10.00 - 22.00 hrs.

Cuisine Type

Charcoal Grill and Raw Bar

RESTAURANTS

Mountain side

HOM



Opening Time

*Tuesdays to Saturdays
18.30, 19.30, and 20.30 hrs.*

(1 Day advance reservation required)

Cuisine Type

Innovative cuisine that uses fermentation techniques to unlock incredible flavours

PINTO



Opening Time

*Breakfast 6.30 - 10.30 hrs.
Food menu 12.00 - 22.00 hrs.*

Cuisine Type

Fire Inspired Casual Dining

TENGOKU



Opening Time

*Thursday to Monday 18.00 - 22.00 hrs.
(Reservations recommended)*

Cuisine Type

Osaka Inspired Kitchen

DEVAS' LOUNGE



Opening Time

10.00 - 18.00 hrs.

Cuisine Type

Café and High Tea

HOTEL SERVICES & AMENITIES

As part of the prestigious InterContinental Phuket Resort, these exclusive residences grant you seamless access to exceptional hotel facilities and the pristine beachfront. Enjoy the legendary InterContinental service and an elevated lifestyle, where every moment is infused with comfort, sophistication, and the effortless pleasures of resort living.





LIST OF SERVICES*

- 🌿 Concierge Service
- 🌿 Housekeeping Service
- 🌿 Laundry Service
- 🌿 Fixing & Repair Service
- 🌿 Internet Service in all facilities areas
- 🌿 Buggy Service
- 🌿 In Room Dining
- 🌿 Private Chef & Catering Services
- 🌿 Personal Fitness Training
- 🌿 Transportation Arrangements
- 🌿 Pre-arrival Provisioning
- 🌿 Grocery Pick up & Delivery
- 🌿 Private Pool Cleaning

**The availability of services and amenities is subject to change and additional charges.*

IHG® ONE REWARDS

Residents are awarded IHG One Rewards Diamond Elite status for a limited time, granting recognition and elevated rewards at more than 6,000 IHG Hotels & Resorts worldwide.*

**Terms and conditions are subject to change without prior notice.*



PRIVILEGES FOR RESIDENCE OWNER

Exclusive offers at InterContinental Phuket Resort*

-  Tennis court rental
-  Best Available Rate on hotel accommodation at time of booking
-  Food and non-alcoholic beverages at all restaurants and bars
-  Planet Trekkers (Kids Club) bookings
-  Sati Spa à la carte menu treatments
-  Activity classes
-  Bicycle rental
-  Private yacht charters
-  Hotel airport transfers

** The availability of services and amenities is subject to change and additional charges.*

DIRECT ACCESS TO KAMALA BEACH



Residents enjoy an elevated lifestyle with access to select services and amenities offered by InterContinental Phuket Resort — including Michelin-recognised dining venues, an award-winning spa, curated experiences, and conveniences such as in-room dining and housekeeping services.

1 Sawan Building
Hom (Fine Dining)
Sati Spa (Ground Floor)

2 Pasutha Building
Pinto Restaurant
Tengoku Restaurant
Meeting Rooms (Arum, Api, Ava)
Devas' Lounge

3 Tennis Court

4 Kids Club

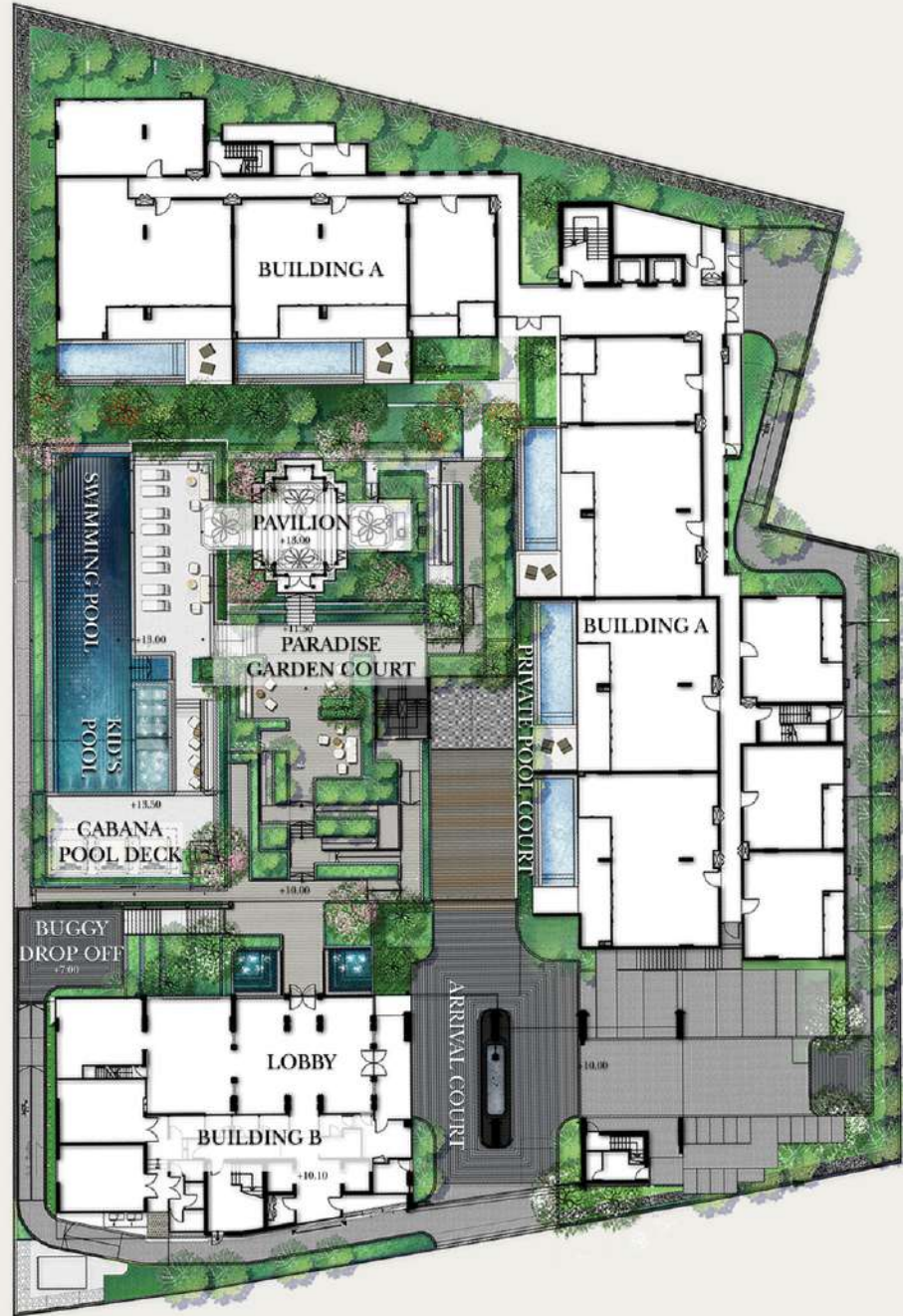
5 Apo Building
Jaras (Thai Dining)

6 Pine Beach Bar

7 Beach Pool

8 333 At The Beach

MASTER PLAN RESIDENCES



RESIDENCES FACILITIES

Wellness & Lifestyle Facilities

Lobby & Reception

Library & Game Room,

Meeting Room

Sala Pavilion (Co-Kitchen)

Paradise Garden Court

25m Lap Pool with Hydrotherapy features and Shallow Pool

Kid's pool

Cabana Pool deck

Technogym Fitness with Grohe AquaSymphony.

Rooftop Facilities

Wellness & Meditation zone

Rooftop Sunken Seat

Pavilion with panoramic mountain and ocean views

Meditation Zone

Yoga Decks

Kids Creative Space

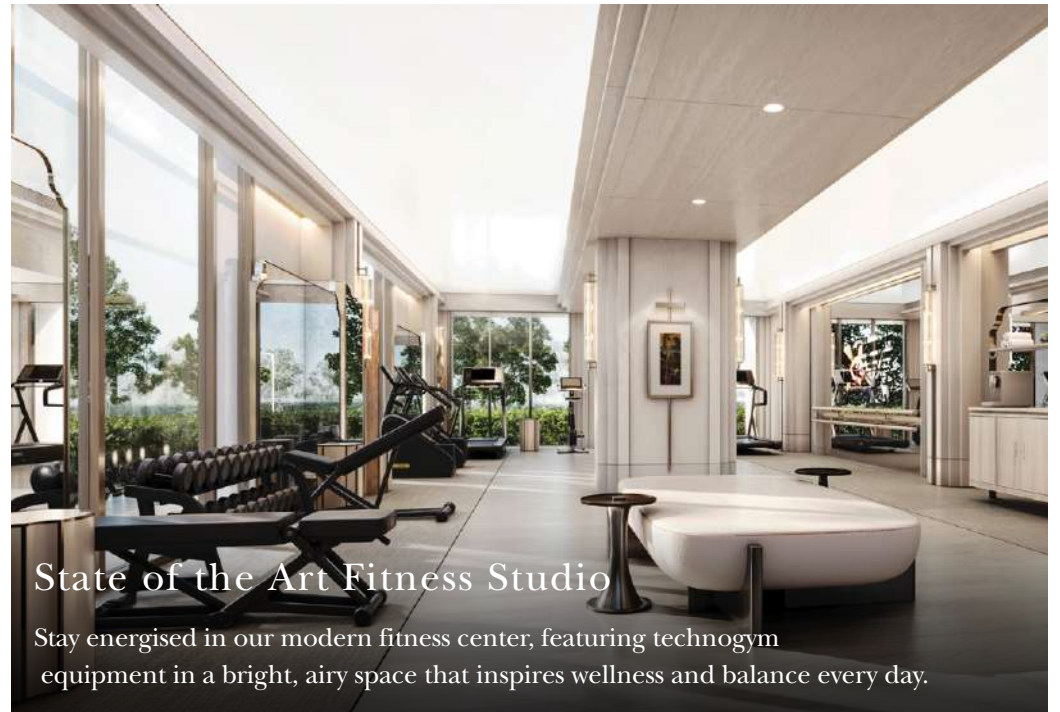
**Residence owners are welcome to use selected hotel facilities and recreation areas. However, please note that the Club InterContinental Lounge and the mountainside swimming pool are not accessible to Residence owners.*





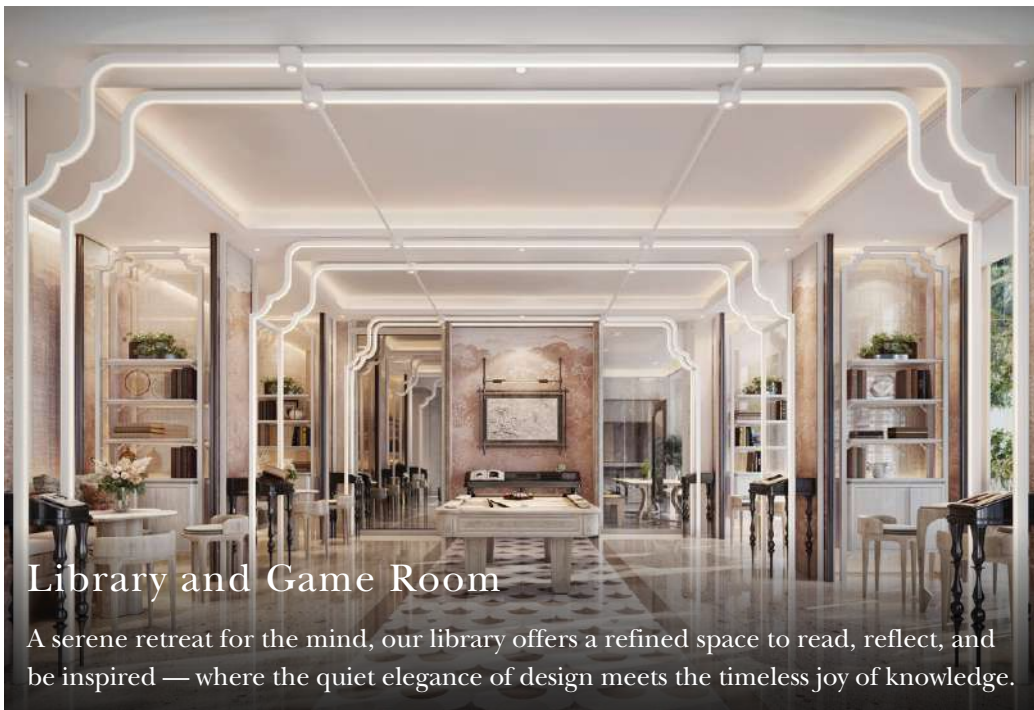
Sala Pavillion and Co-Kitchen

A versatile space for culinary delights. Enjoy private catering, bespoke chef services from the hotel, fully equipped setting designed for your entertaining pleasure.



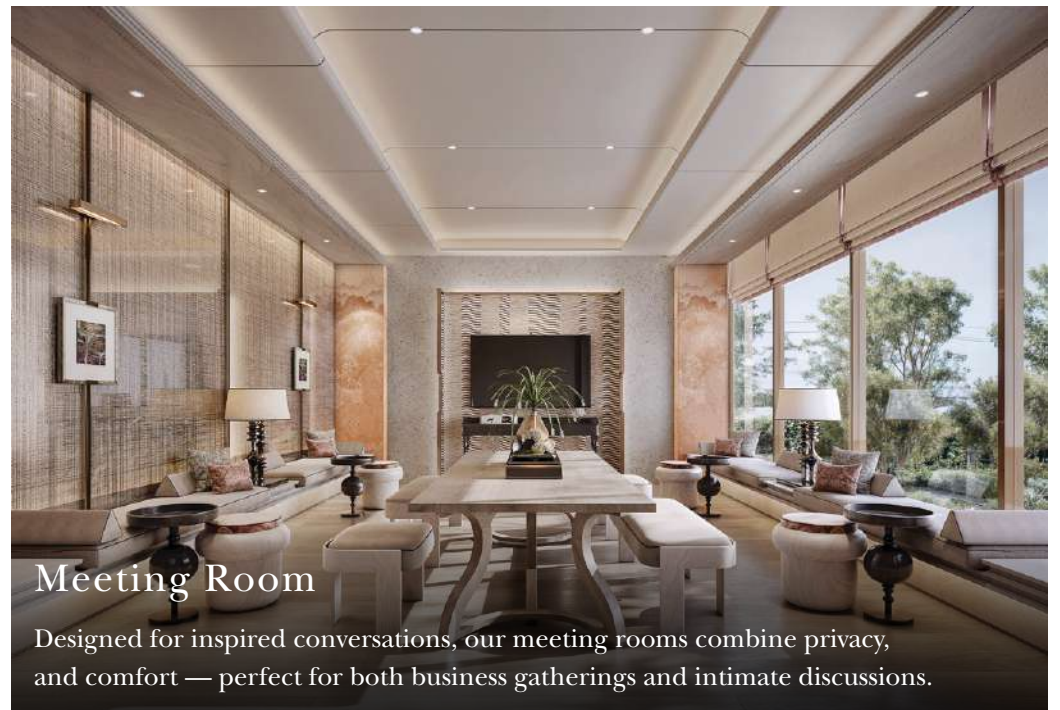
State of the Art Fitness Studio

Stay energised in our modern fitness center, featuring technogym equipment in a bright, airy space that inspires wellness and balance every day.



Library and Game Room

A serene retreat for the mind, our library offers a refined space to read, reflect, and be inspired — where the quiet elegance of design meets the timeless joy of knowledge.



Meeting Room

Designed for inspired conversations, our meeting rooms combine privacy, and comfort — perfect for both business gatherings and intimate discussions.

FACILITIES METICULOUSLY CRAFTED TO ELEVATE YOUR COMFORT AND CONVENIENCE

-  ***Biophilic Design – Nature as Your Everyday Escape***
The architecture ensures greenery is always within sight, offering a soothing environment where residents can unwind, recharge, and find balance in their daily lives.
-  ***Cutting-Edge Technologies for Elevated Living***
Featuring world-class innovations such as AquaSymphony shower, Technogym fitness equipment, and advanced hydrotherapy systems, every detail is designed to enhance comfort, wellness, and modern luxury
-  ***Comprehensive Lifestyle Facilities for Every Day***
A wide range of amenities supports daily well-being — from fitness and wellness to relaxation and socializing — offering residents a complete lifestyle experience without compromise.





FLOOR PLAN

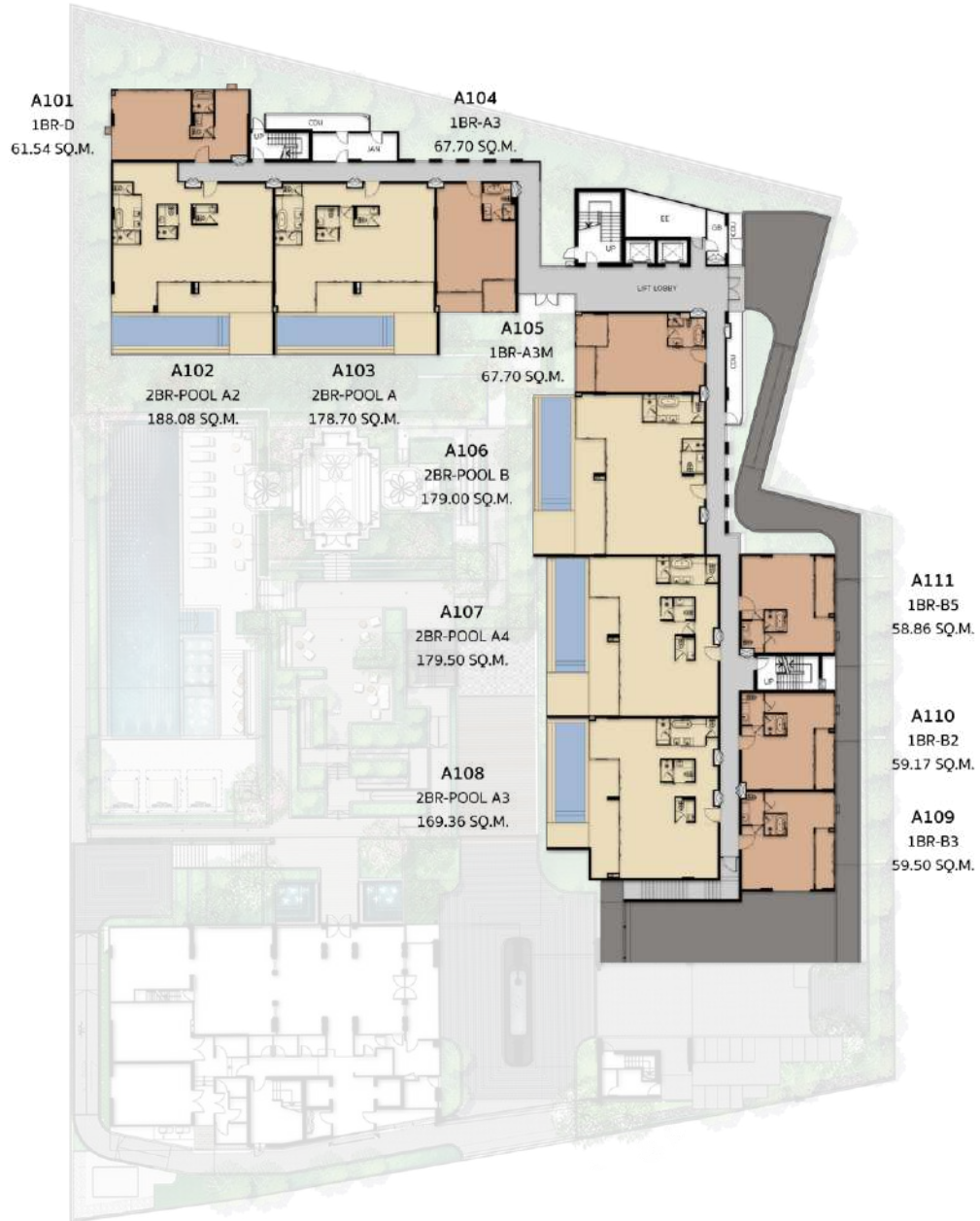
Every residence at InterContinental Phuket Resort is thoughtfully designed to balance elegance, comfort, and functionality. From open, light-filled living areas to serene private retreats, each floor plan reflects a seamless harmony between modern luxury and timeless oriental-inspired design. Explore layouts that elevate everyday living into an art form.





Building A

G Floor



Building A

2nd Floor



Building B

2nd Floor

Building A

3rd Floor

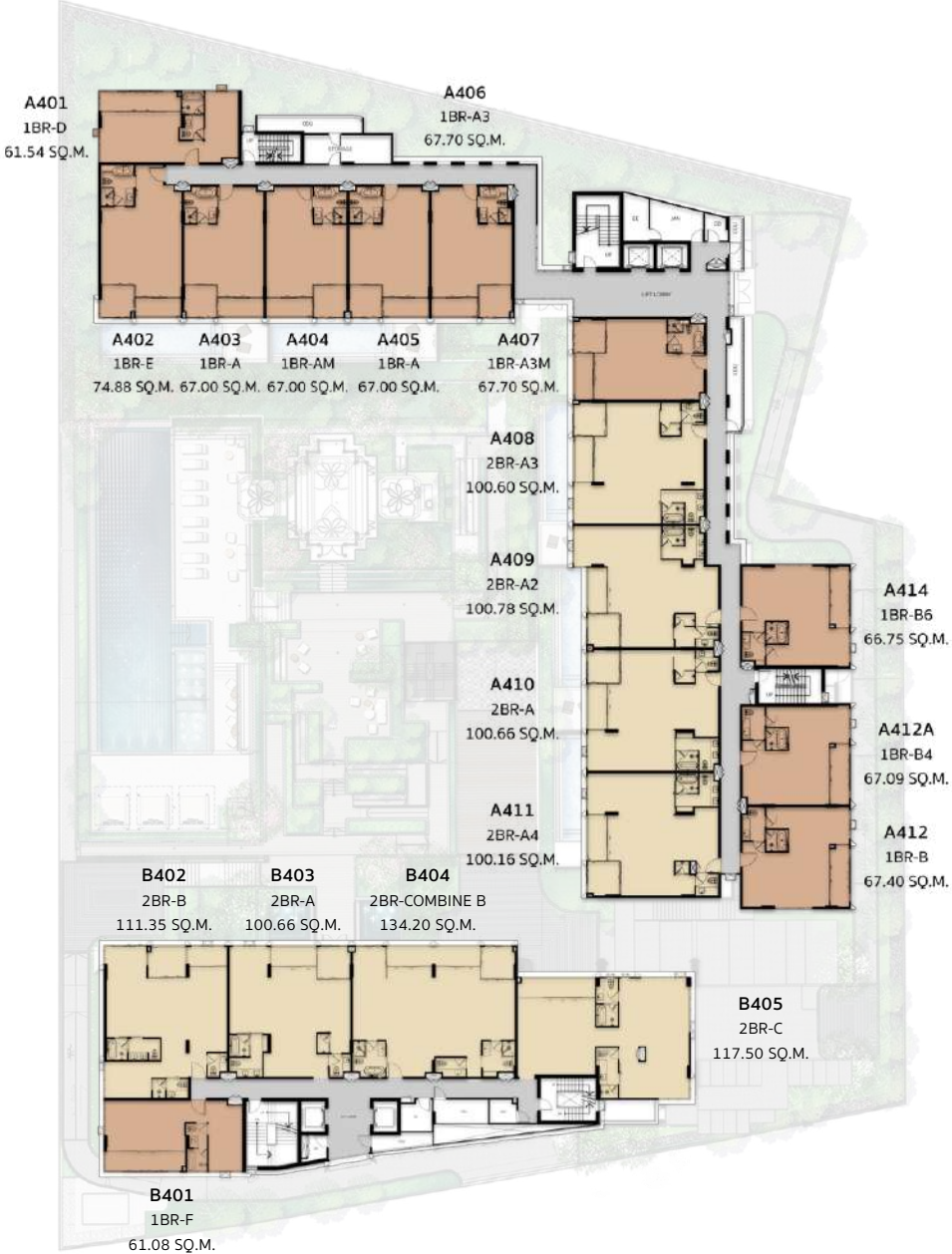


Building B

3rd Floor

Building A

4th Floor



Building B

4th Floor

Building A

5th Floor

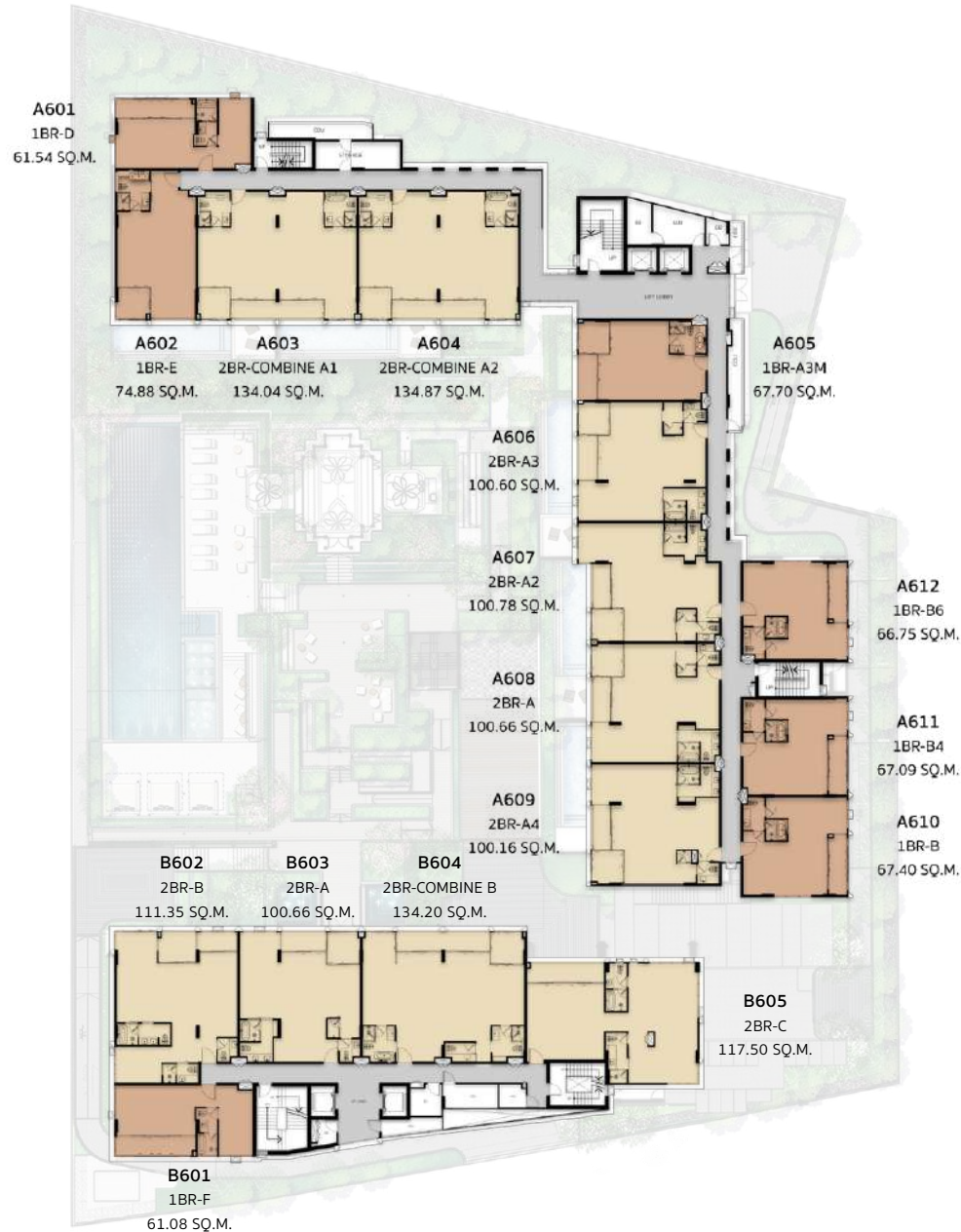


Building B

5th Floor

Building A

6th Floor



Building B

6th Floor

Building A

7th Floor



Building B

7th Floor





Building B

Roof Floor



REFINED LIVING SPACES

111 Fully Furnished Homes, Designed for Distinction
From 1–5 bedroom suites, each residence is tailored to diverse lifestyles while upholding the highest standards.

-  *Expansive unit frontage framing uninterrupted views.*
-  *Large balconies seamlessly extend indoor spaces outdoors.*
-  *Flexible multi-purpose rooms — ideal for a private wellness retreat, semi-outdoor dining, a home office, or even an extra bedroom.*
-  *Premium specifications include Küppersbusch kitchens with jade marble island, Grohe AquaSymphony shower system, American Standard washlets, and high-spec finishes throughout.*



UNIT TYPES

1 Bedroom

- 1 Bedroom (Mountain View): 59 - 67 sq.m.
 - 1 Bedroom (Paradise View): 67 sq.m.
 - 1 Bedroom Corner (Mountain View): 58 - 67 sq.m.
 - 1 Bedroom Corner (Paradise View): 74 - 76 Sq.m.
-

2 Bedroom

- 2 Bedroom (Paradise View): 100 - 134 sq.m.
 - 2 Bedroom Corner (Paradise View): 100 - 111 Sq.m.
 - 2 Bedroom Plus (Mountain View): 117 sq.m.
 - 2 Bedroom Plus (Paradise View): 134 Sq.m.
 - 2 Bedroom with Private Pool: 169 - 188 sq.m.
-

3 Bedroom

- 3 Bedroom (Paradise View): 203 sq.m.
 - 3 Bedroom (Paradise with Mountain View): 214 sq.m.
-

Junior Penthouse

- 4 Bedroom (Paradise View): 201 sq.m.
-

Penthouse

- 5 Bedroom (Paradise with Mountain View): 425 sq.m.



1 BEDROOM

67.00 sq.m.







2 BEDROOM

100.66 sq.m.





PROJECT SPECIFICATION

Living Area & Bedroom

Flooring

SPC Floor (wood pattern) or equivalent

General Interior Wall

Smooth surface plastering and paint finishing

Ceiling

Gypsum board with smooth surface plastering and paint finishing

Balcony

Flooring

Porcelain tile (wood pattern) or equivalent

General Interior Wall

Smooth surface plastering and paint finishing

Ceiling

Gypsum board (moisture resistant board) with smooth surface plastering and paint finishing

Kitchen

Flooring

Porcelain tile or equivalent

General Interior Wall

Smooth surface plastering and paint finishing

Ceiling

Gypsum board with smooth surface plastering and paint finishing

Fitted Furniture & Kitchen set

Wardrobe & Shoe cabinet

As specified

Kitchen Set

As specified

Loose Furniture Set

As specified

Electric Hob Hood & Combi Oven

Küppersbusch or equivalent

Sink & Tap

TEKA or equivalent

Electrical Fitting

Switch & Receptacles

Schneider or equivalent

Lighting Fixtures

Down Light with LED bulb

General Air-Conditioning System

Air-conditioning VRF-VRF concealed type

Plus room area Air-Conditioning System

Air-conditioning cassette type

Digital Door Lock Set

Unit main entrance door

Bathroom

Flooring

Porcelain tile or equivalent

Wall Finishing

Porcelain tile or equivalent

Ceiling

Gypsum board (moisture resistant board) with smooth surface plastering and paint finishing

Vanity Basin

American Standard or equivalent

Sanitary Wares & Fixtures

American Standard and Grohe or equivalent

Bathtub

Trusol Acrylid white matte colour or equivalent

Shower Screen

Clear Tempered glass or equivalent



ELEVATED HEALTH & WELLNESS PROGRAMME

Comprehensive Facilities for Every Generation

Every element is designed to promote balance, wellness, and sustainability.

- 🌿 *Wellness & lifestyle facilities: 25 m lap pool with hydrotherapy, Technogym fitness with Grohe AquaSymphony, rooftop yoga pavilion, Paradise Garden Court, co-kitchen sala pavilion, library, game room, and meeting facilities*
- 🌿 *Hotel-enhanced living: Personal trainers, curated wellness programs, spa therapies, and event services*
- 🌿 *Sustainability at the core: Solar panels, water recycling, Oklin waste solutions, Fitwel certification*

SUSTAINABILITY AT THE CORE



Solar panels are being installed on the rooftop of Building A to support clean, sustainable, and eco-friendly energy.



Water recycling and underground well systems.



Oklin waste management System by hotel

Food waste disposer in unit room (3 Bedroom above)



Targeting Fitwel certification — aligning with global wellness and sustainability standards.